

# SENSOR INTERFACE UNIT

## SIU-400



The SIU-400 Sensor Interface Unit is a local interface unit designed to expand the input capacity of a logging or control system.

All sensor data is linked by CAN to a main control unit and so reduces the harnessing while extending the analogue input capabilities of the system.

### Electrical

- Supply Voltage 11.0 to 16.0V DC (full operation)
- Supply Voltage not to exceed 17V continuous (unit is protected against transients and reverse polarity)
- Supply Current operating 90mA typical @ 13.8V including typical transducer loads

### Application

- Interface to remote sensors, e.g. controls on steering wheel

### Electro Magnetic Compatibility

- Complies with the essential protection requirements of 89/336/EEC when installed in a screened enclosure

### Mechanical

- Weight 135g

### Connection Definition

- Connector A : Deutsch ASDD06-09PN
- Connector B : Deutsch ASDD06-09PA
- Connector C : Deutsch ASDD06-09PB
- For connection descriptions, please consult our Technical Consultancy service.

### Inputs

- 11 0 to 5V analogue inputs

### Outputs

- 1 5V 50mA potentiometer supply, (split between 3 connectors)

### Communications

- 1 CAN bus interface, 1Mbaud as standard

### Diagnostics

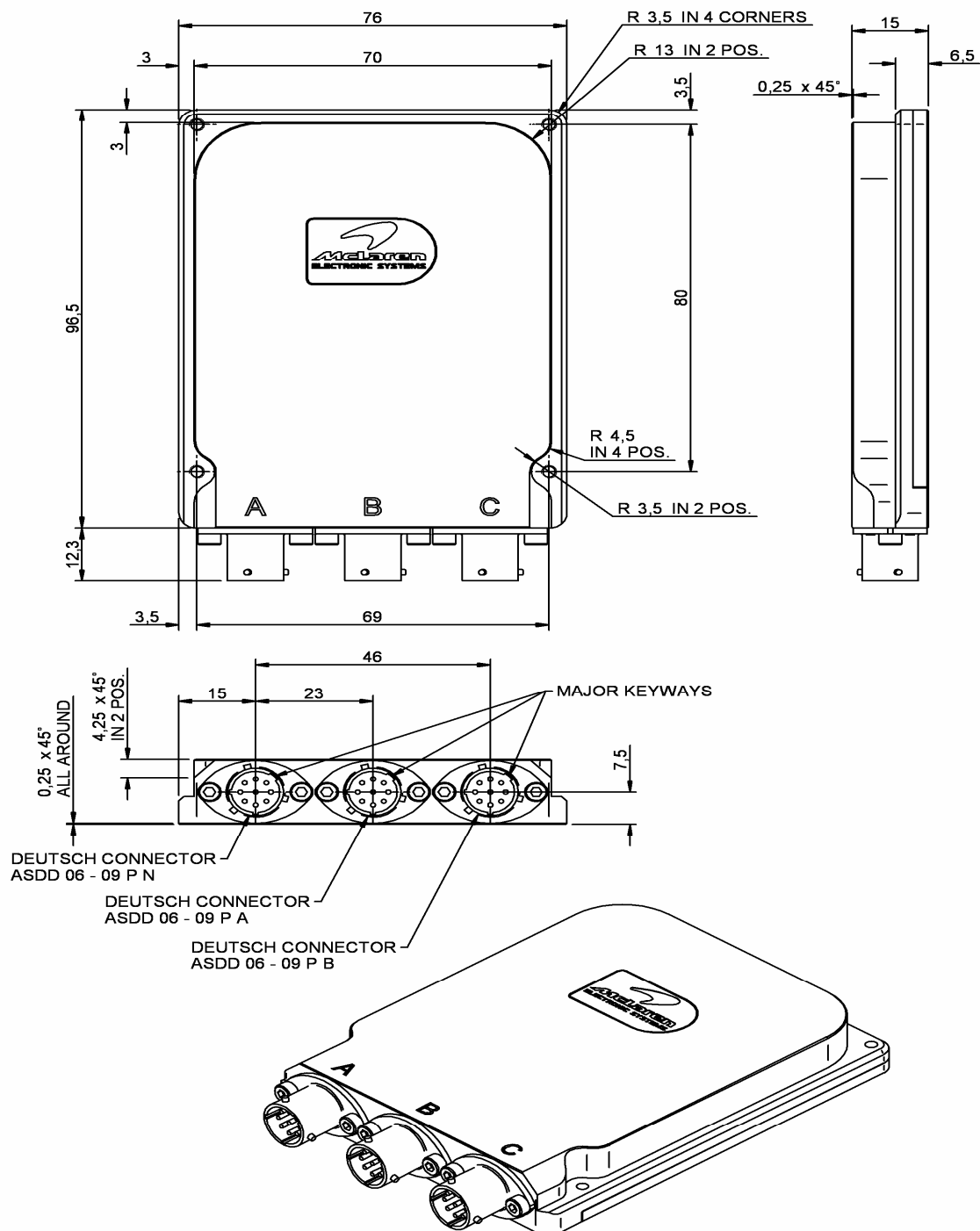
- 1 internal diagnostic temperature sensor
- 1 internal diagnostic 5V potentiometer
- 1 internal diagnostic car battery supply

### Environmental

- Minimum Operating Temperature 0°C
- Board Temperature not to exceed 70°C
- Storage temperature -10 to +125°C
- Vibration 100 to 1000Hz, all axes, 24 hours

# SENSOR INTERFACE UNIT

## SIU-400



Description	Order Code
SIU-400	O 030 110 009 000

20/12/06